



S
D | Skyline Design

Architectural Glass



Since 1983

Made in Chicago

Skyline Design is an award-winning manufacturer of decorative glass for interior and exterior applications. We are distinguished among glass fabricators by our creative collaborations with notable designers, photographers, and artists, and by our commitment to sustainable and state-of-the-art processes, such as environmentally-friendly etching and texturing, ceramic frit and UV digital printing, back-painting, and lamination.

At Skyline Design we ensure the highest quality product by overseeing every step of the production process, from file preparation and color matching to laminating and tempering.

Capabilities



Exterior Glass

An unlimited combination of design options allows you to fully customize the glass for your exterior project. Each glass panel can be created from a unique piece of artwork and tailored to your specifications for branding and wayfinding.



Eco-Etch® Glass Etching

Our proprietary environmental etching process engraves artwork or logos into the glass surface using sustainable materials. Eco-etch glass comes with a lifetime warranty.



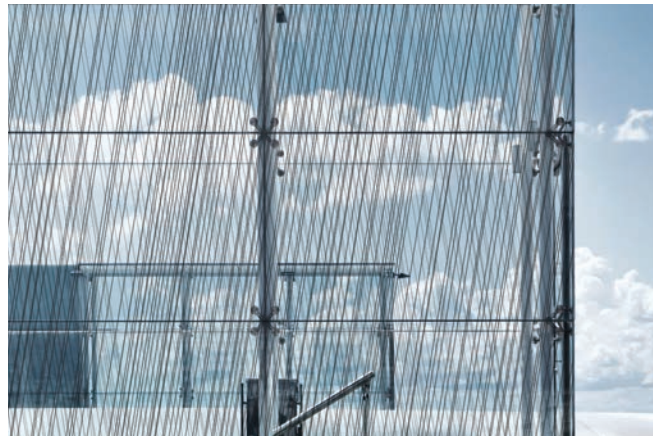
Digital Printing

Our proprietary digital technology can reproduce imagery in a variety of processes: printed directly on glass with UV-cured inks, fused into glass with ceramic frit inks, laminated between two lites of glass, or printed on vinyl for field application to existing glass.



Healthcare Solutions

Skyline Design is pioneering the use of glass in healthcare facilities, where it offers greater visibility for patients and providers while at the same time preserving privacy, reducing the spread of bacteria and viruses, and controlling noise.



Bird-Friendly Exterior Glass

Skyline Design produces bird-friendly exterior glass using patterns and processes that make glass visible to migrating birds.



Vitracolor® Back-Painted Writable Glass

Our back-paint process utilizes low-VOC and water-based paints to create a vast expanse of deep color or a smaller writable glass surface. Limitless color options. Available as magnetic or non-magnetic.



Laminated Safety Glass

Skyline Design produces impact resistant acoustic glass made with EVA interlayers, which are not only highly resistant to moisture, heat, and discoloration, but also block 99% of UV rays.



Hardware

Skyline Design offers engineered hardware systems for both interior and exterior projects.

Specifications

Glass Type

Monolithic, Laminated Safety Glass, Insulated Glass Units, Mirror, Acid etch

Glass Sizes

Up to 96" x 144"

**Maximum size is dependent on fabrication technique, glass type, and weight*

Glass Thickness

Up to 3/4" Monolithic
Up to 1" Laminated Unit

Interior Applications

Architectural Systems, Doors, Feature Walls, Artwork, Railings, Office Furniture Upmounts, Elevator Cabs, Bathroom Partitions, Wall-cladding, Wayfinding, Glassboards

Exterior Applications

Façades, Curtain Walls, Rainscreens, Fins, Canopies, Bus Shelters and Transit, Public Art, Railings, Wayfinding, Signage, Bird-Friendly Glass

Fabrication

Cutting, Tempering, CNC, Polishing, Laminating, Roll-coating

Techniques

Etching, Texture, Digital UV Printing, Digital Ceramic Frit Printing, Back-Painting



Contact us for more information! 888-278-4660 / sales@skydesign.com



skydesign.com